



# Washing Machine

USER MANUAL

RW-A80VP

For Household Use Only  
Before operating the appliance, please read  
this manual and all the safety instructions  
thoroughly and keep it for future reference.

# CONTENTS

---

## SAFETY INSTRUCTIONS

|                             |   |
|-----------------------------|---|
| ■ Safety instructions ..... | 2 |
|-----------------------------|---|

## INSTALLATION

|  |    |
|--|----|
| ■ Product description .....                            | 8  |
| ■ Accessories.....                                     | 8  |
| ■ Unpacking the washing machine .....                  | 9  |
| ■ Installation area .....                              | 9  |
| ■ Installation of the cabinet base cover.....          | 10 |
| ■ The installation of drain hose .....                 | 10 |
| ■ Levelling the washing machine .....                  | 10 |
| ■ Selection of tap .....                               | 11 |
| ■ Connection of inlet hose, tap and washing machine... | 11 |

## OPERATIONS

|  |    |
|--|----|
| ■ Preparation before washing.....                | 12 |
| ■ Washing .....                                  | 12 |
| ■ After washing.....                             | 12 |
| ■ Washing matters needing attention .....        | 13 |
| ■ The usage of detergent and washing powder..... | 13 |
| ■ Control panel .....                            | 14 |
| ■ Option.....                                    | 15 |
| ■ Personalized setting of washing program.....   | 16 |
| ■ Operations of washing process.....             | 16 |
| ■ Washing program table .....                    | 17 |

## MAINTENANCE

|                                    |    |
|------------------------------------|----|
| ■ Cleaning and care .....          | 18 |
| ■ Cleaning the cabinet.....        | 18 |
| ■ Cleaning the inlet filter.....   | 18 |
| ■ Cleaning drain pump filter ..... | 19 |
| ■ Trouble shooting.....            | 20 |
| ■ Technical information .....      | 21 |

# SAFETY INSTRUCTIONS

---

## ■ Safety instructions

For your safety, the information in this manual must be followed to minimize the risk of fire or explosion, electric shock, or to prevent property damage, personal injury or loss of life.

- This appliance is not intended for use by persons (including children) with reduced physical, sensory or mental capabilities or lack of experience and knowledge unless they have been given supervision or instruction concerning use of the appliance by a person responsible for their safety.
- Children should be supervised to ensure that they do not play with the appliance.
- If the supply cord is damaged, it must be replaced by the manufacturer, its service agent or similarly qualified persons in order to avoid a hazard.
- The new hose-sets supplied with the appliance are to be used and that old hose-sets should not be reused.
- The openings must not be obstructed by a carpet.
- This appliance is intended to be used in household and similar applications such as:
  - staff kitchen areas in shops, offices and other working environments;
  - farm houses;
  - by clients in hotels, motels and other residential type environments;
  - bed and breakfast type environments.

# SAFETY INSTRUCTIONS

---

| Model    | Washing Capacity | Standard Water Pressure |
|----------|------------------|-------------------------|
| RW-A80VP | 8.0kg            | 0.03MPa-0.8MPa          |

## Explanation of the symbols:



### WARNING!

This combination of symbol and signal word indicates a potentially dangerous situation which may result in death or serious injuries unless it's avoided.



### CAUTION!

This combination of symbol and signal word indicates a potentially dangerous situation which may result in slight or minor injuries or damage to property and the environment.



### NOTE!

This combination of symbol and signal word indicates a potentially dangerous situation which may result in slight or minor injuries.

# SAFETY INSTRUCTIONS

---

## WARNING !

### The electric shock!

- This appliance is for indoor use only.
- Do not put washing machine at humid place.
- Hands shall not be inserted into running spin-dry tub .
- If the spin-dry tub does not stop within 15 seconds after opening the cover , stop using the machine and have it repaired.
- Before any maintenance the device, unplug the appliance from the mains.
- Always unplug the machine and turn off the water supply after use.
- To ensure your safety, power plug must be inserted into an earthed three-pole socket. Check carefully and make sure that your socket is properly and reliably earthed.
- Make sure that the water and electrical devices must be connected by a qualified technician in accordance with the manufacturer's instructions and local safety regulations.

# SAFETY INSTRUCTIONS

---

## Risk to children!

- The appliance can be used by children aged from 8 years and above and persons with reduced physical, sensory or mental capabilities or lack of experience and knowledge if they have been given supervision or instruction concerning use of the appliance in a safe way and understand the hazards involved. Children shall not play with the appliance. Cleaning and user maintenance shall not be made by children without supervision.
- Animals and children may climb into the machine. Check the machine before every operation.
- Young children should be supervised that they do not play with the appliance.
- Machine may be very hot during the operation. Keep kids and pets far away from the machine during the operation very wet rooms as well as in the rooms with explosive or caustic gas.
- Remove all packages before using the appliance. Otherwise, serious damage may result.
- The washing machine with single inlet valve only can be connected to the cold water supply.
- Plug must be accessible after installation.

## Risk of explosion!

- Do not wash or dry articles that have been soaked in, or dabbed with combustible or explosive substances (such as wax, oil, paint, gasoline, degreasers, dry-cleaning solvents, kerosene, etc.) Beforehand thoroughly rinse items of washing by hand. This may result in fire or explosion.

# SAFETY INSTRUCTIONS

---

## CAUTION!

### Installing the product!

- This washing machine is for indoor use only.
- It isn't intended to be built-in using.
- The openings must not be obstructed by a carpet.
- Washing machine shall not be installed in bath room or very wet rooms as well as in the rooms with explosive or caustic gases.
- Remove all packages and transport bolts before using the appliance. Otherwise, serious damage may result.
- The washing machine with single inlet valve only can be connected to the cold water supply.
- Plug must be accessible after installation.
- Do not wash, spin, or dry water-proof seats, down-filled coat , mats, or clothing. Do not wash thick, hard mats even if the washer mark is on the care label. This may result in injury or damage to the washer, walls, floor, or clothing due to abnormal vibrations.

### Risk of damaging appliance!

- Your product is only for home use and is only designed for the textiles suitable for machine washing.
- Do not climb up and sit on top lid of the machine.
- Do not lean against machine top lid.
- Cautions during handling machine:
  - 1.Transport bolts shall be reinstalled to the machine by a specialized person.
  - 2.The accumulated water shall be drained out of the machine.
  - 3.Handle the machine carefully. Never hold each protruded part on the machine while lifting. Machine top lid cannot be used as the handle during the conveyance.
  - 4.This appliance is heavy. Transport with care.

# SAFETY INSTRUCTIONS

---

- Please do not close the top lid with excessive forces.
- It is forbidden to wash carpets.

## Operating the appliance!

- Before washing the clothes at first time, the product shall be operated in one round of the whole procedures without the clothes inside.
- Flammable and explosive or toxic solvents are forbidden. Gasoline and alcohol etc. Shall not be used as detergents. Please only select the detergents suitable for machine washing, especially for tub .
- Make sure that all pockets are emptied. Sharp items such as coin, brooch, nail, screw or stone etc. may cause serious damages to this machine.
- Never refill the water by hand during washing.
- After the program is completed, wait for two minutes to open the top lid.

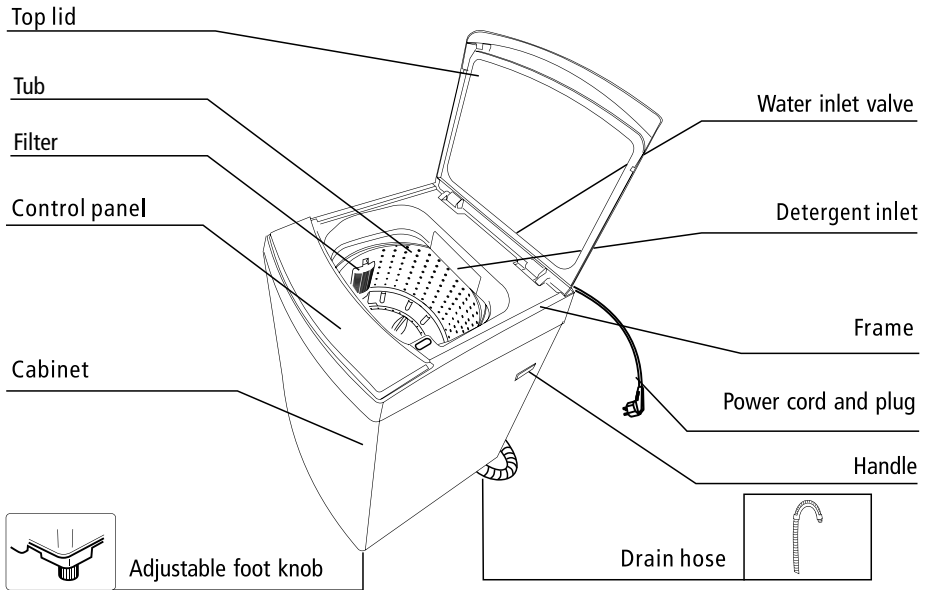
## Packaging/Old appliance



This marking indicates that this product should not be disposed with other household wastes. To prevent possible harm to the environment or human health from uncontrolled waste disposal, recycle it responsibly to promote the sustainable reuse of material resources. To return your used device, please use the collection systems or contact the retailer where the product was purchased. They return and can take this product for environmental safe recycling.

# INSTALLATION

## ■ Product description



### 📌 NOTE!

- The product line chart is for reference only, refer to real product as standard.

## ■ Accessories



Inlet hose assembly

Cabinet baseboard

Manual

Screw

Drain hose

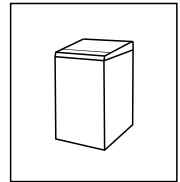
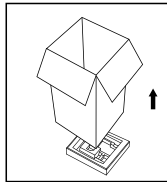
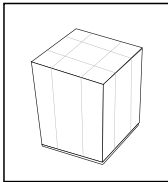
# INSTALLATION

## ■ Unpacking the washing machine

### ⚠ WARNING !

- Packaging material (e.g. Films, Styrofoam) can be dangerous for children.
- There is a risk of suffocation ! Keep all packaging well away from children.

1. Remove the cardboard box and styrofoam packing.
2. Lift the appliance and remove the base packing.
3. Remove the inlet hose from the tub .



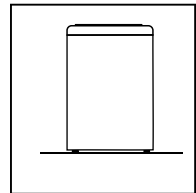
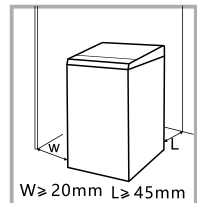
## ■ Installation area

### ⚠ WARNING !

- Stability is important to prevent the product from wandering!
- Make sure that the product should not stand on the power cord.

Before installing the machine, the location characterized as follows shall be selected:

1. Rigid, dry, and level surface
2. Avoid direct sunlight
3. Sufficient ventilation
4. Room temperature is above 0 °C
5. Keep far away from the heat resources such as coal or gas.



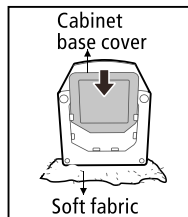
# INSTALLATION

## ■ Installation of the cabinet base cover

- Running the machine or washing while placing on the bottom foam is strictly forbidden

Lean the washing machine backward at a specific angle, then insert the cabinet base cover into washing machine base trough, push it to the end.

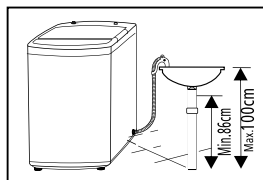
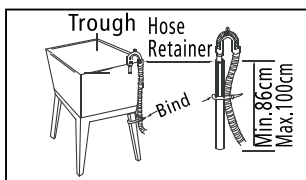
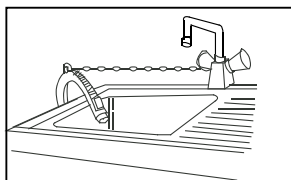
Fix the cabinet base cover and cabinet base with all screws coming with the machine.



## ■ The installation of drain hose

### ⚠ WARNING!

- Do not kink or protract the drain hose.
- Position drain hose properly, otherwise damage might result of water leakage.
- If drain hose is too long, do not force it into washing machine as it will cause abnormal noises.

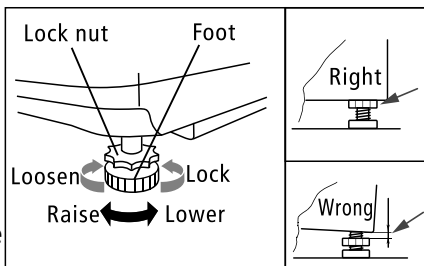


## ■ Levelling the washing machine

### ⚠ WARNING!

- The lock nuts on all four feet must be screwed tightly against the housing.

1. Check if the legs are closely attached to the cabinet. If not, please turn them to their original positions tighten the nuts.
2. Check alignment of the appliance with a leveler, adjust it if needed.
3. Loosen the lock nut and turn the feet until it closely contacts with the floor.
4. After being locked properly, press four corners again to make sure that they have been adjusted properly.



# INSTALLATION

## ■ Selection of tap

Please select appropriate tap.



Ordinary faucet



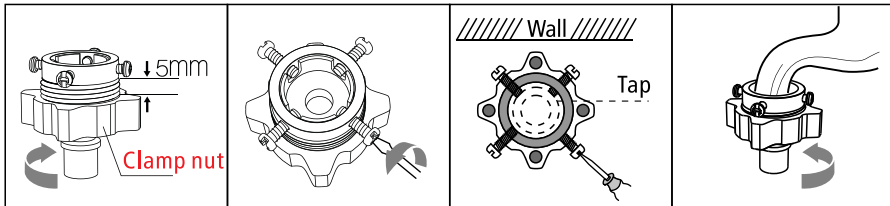
Screw tap



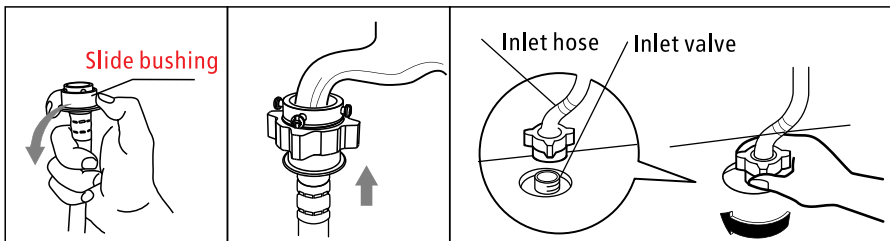
Special washing machine tap

## ■ Connection of inlet hose, tap and washing machine

1: Connection between ordinary tap and inlet hose.

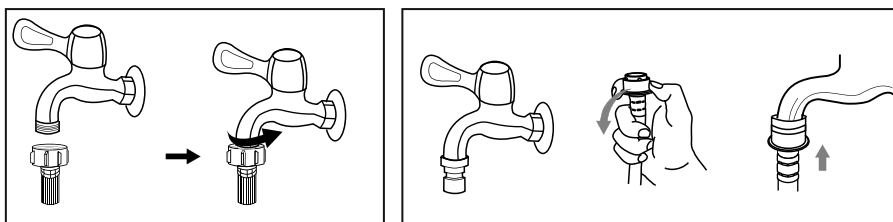


1. Loosen clamp nut to show 5mm thread
2. Loosen four bolts
3. Set connecting base on tap and tighten bolts evenly
4. Tighten clamp nut



5. Press slide bushing, insert inlet hose into connecting base
6. Connection finished
7. After connection and installation, check if there is water leakage

2: Connection between screw tap and inlet hose.



Tap with threads and inlet hose

Special tap for washing machine

### ⚠ WARNING !

- To prevent leakage or water damage, follow the instructions in this chapter!
- Do not kink, crush, modify or sever water inlet hose.

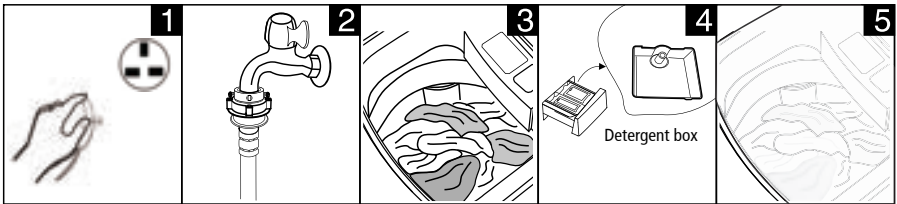
# OPERATIONS

## ■ Preparation before washing

### ⚠ CAUTION !

- Before washing, please make sure it's installed properly.
- Before washing it at first time, the washing machine shall be operated in one round of the whole procedures without clothes in as follows.

A complete cycle is as shown below



Plug in

Open tap

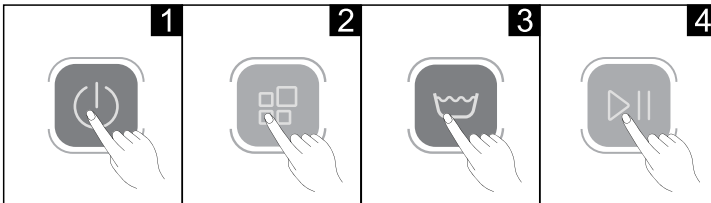
Put clothes in the tub

Add detergent

Close lid

(Do not put clothes in the tub for first wash.)

## ■ Washing



Power on

Select program

Select level

Start up

### 📌 NOTE !

- If default is selected, step 2, 3 can be skipped.

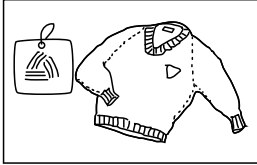
## ■ After washing

Buzzer will beep after washing finished and the power supply will be cut off automatically. Then unload the laundry.

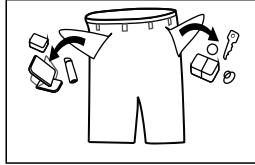
# OPERATIONS

## ■ Washing matters needing attention

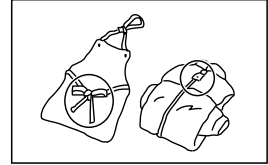
- The working condition of the washer should be (0-40)°C. If used under 0°C, the inlet valve and draining system may be damaged. If the machine is placed under condition of 0°C or less, then it should be transferred to normal ambient temperature to ensure the water supply hose and drain hose are not frozen before use.
- Please check the labels and the explanation of using detergent before wash. Use non-foaming or less-foaming detergent suitable for machine washing properly.



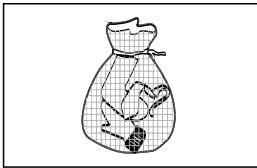
Check the label



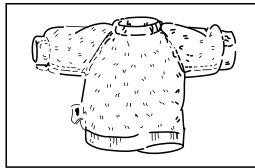
Take out the items out of the pockets



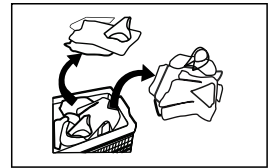
Knot the long strips, zip or button



Put small clothes into the pillow slip



Turn easy-pilling and long-pile fabric inside out



Separate clothes with different textures

### ⚠ WARNING !

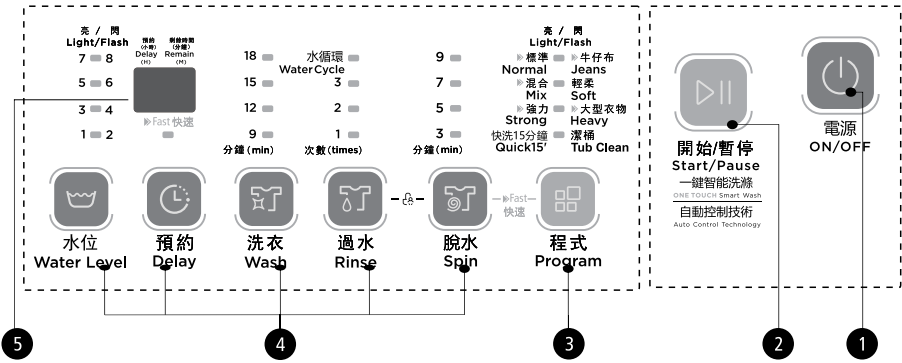
- When washing a single piece of clothing, it may easily cause great eccentricity and give alarm due to great unbalance. Therefore it is suggested to add one or two more clothes to be washed together so that spin can be done smoothly.
- Don't washing the clothes touching with kerosene, gasoline, alcohol and other flammable materials.

## ■ The usage of detergent and washing powder

- As for the agglomerated or ropy detergent or additive, before they are poured into the detergent box, it is suggested to use some water for dilution to prevent the inlet of detergent box from being blocked and overflowing while filling water.
- Choose suitable type of detergent for the various washing temperature to get the best washing performance with less water and energy consumption.

# OPERATIONS

## Control panel



### NOTE!

- The chart is for reference only, Please refer to real product as standard.

#### 1 On/Off

Product is switched on or off.

#### 2 Start/Pause

Press the button to start or pause the washing cycle.

#### 3 Program

Available according to the laundry type.

#### 4 Option

This allows you to select an additional function and will light when selected.

#### 5 Display

The display shows the settings, estimated time remaining, options, and status messages for your washer. The display will remain on through the cycle.

When LED flashing, it means the time that delay to start the machine. When LED lighting, it means the program time that remaining.

# OPERATIONS

## ■ Option

Only for washers having these function.



### Water level

Select water level according to clothing categories, degree of soiling and washing habits of customers.



### Wash /Rinse /Spin

Washing time, rinsing times, spinning time and other settings can be selectable.

When the water circulation light is on, draining is not required.



### Delay

Set the delay function

1. Select a program
2. Press the [Delay] button to choose the time
3. Press [Start/Pause] to commence the delay operation



On



Choose the Program



Setting time



Start

### Cancel the delay function

Press the appointment button to reset the appointment time to zero. It should be pressed before starting the program. If the program already started, should press the [On/Off] button to reset the program.

## ⚠ CAUTION !

- If there is any break in the power supply while the machine is operating, a special memory stores the selected program when the power is restarted.
- **The display time is the end time of the Delay.**



### Fast

▶Fast



ON/OFF



▶Fast



The Fast light



Start



### Child Lock

To avoid mis operation by children.



Power on



Start



Press Child Lock

## ⚠ CAUTION !

- Press the two button also to be released the function.
- The " Child Lock" will lock all buttons except [ On/Off ].

# OPERATIONS

## ■ Personalized setting of washing program

Customers can select washing program according to actual demand, and set washing time, rinsing times, spinning time, water volume and appointment time.



## ■ Operations of washing process

Customers can set single process or combinations of washing, rinsing and spinning freely according to demand. Detailed operations as follows for different models.

### One Touch Smart Wash



### Only wash



### Only spin



### Wash + Rinse + Spin



### NOTE!

- Note: Other process combinations are just like above.

# OPERATIONS

## ■ Washing program table

Programs are available according to the laundry type. (Note: The following washing times will be adjusted according to the water level.) Only for washers having these functions.

- 柔 / 閃 Light/Flash
- ▶ 標準 Normal
- ▶ 混合 Mix
- ▶ 強力 Strong
- ▶ 快洗15分鐘 Quick15'
- 牛仔布 Jeans
- 輕柔 Soft
- 大型衣物 Heavy
- 漂桶 Tub Clean



| Program         |  | Time(min) | Fast(min) |
|-----------------|--|-----------|-----------|
| Jeans           | Suitable to wash Jeans stained/wearable clothes.   | 54        | 45        |
| Quick 15'       | Suitable to wash light stained clothes and clothes in summer.  | 15        | -         |
| Soft            | The tempo is soft, slow washing and spinning speed, to make the lightest wear and deformation.   | 47        | -         |
| Mix             | Suitable to wash cotton, linen, flax and jute clothes.   | 49        | 42        |
| Normal          | Standard fabric washing program, suitable to wash ramie cotton fabric. Wash for once, rinsing for twice, the spin time is longer.  | 52        | 43        |
| Strong          | The wash time is longer, the stream is stronger, so the washing effect is better.  | 54        | 45        |
| Heavy           | Suitable to wash heavy stained/wearable clothes.   | 88        | 67        |
| ▶▶ Fast         | Start up Fast Clean System : Power on, select "Normal", "Heavy", "Mix", "Strong", "Jeans" program, then press Fast button. Press "Start/Pause" button, Fast function starts up. The relative figures will be showed after Fast function starts up. Cancellation of Fast function: when the Fast function was selected, the function can be cancelled by pressing Fast button or power off.   | -         | -         |
| Fuzzy weighting | The washing machine will select the water level automatically according to the load weight.<br>1. When there's water in the tub, this function is not available.<br>2. Before press [Start/Pause] button, if consumer selected the water level, there will be no fuzzy weighting function.<br>3. After press [Start/Pause] button, the washing machine will run the fuzzy weighting function. Consumer can also select the water level to set the water level as needed. | -         | -         |
| Tub Clean       | [Tub Clean] function will use a small amount of water during the final rinse to clean between the inner and outer tub, then the water will be drained after cleaning.<br>Note: [Tub Clean] function will not be automatically run during the [Quick 15'] and [Soft] wash programs.   | -         | -         |

# MAINTENANCE

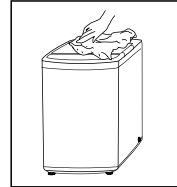
## ■ Cleaning and care

### ⚠ WARNING !

- Before your maintenance starts, unplug the machine and close the tap.

## ■ Cleaning the cabinet

Proper maintenance on the washing machine can extend its working life. The surface can be cleaned with diluted non-abrasive neutral detergents when necessary. If there is any water overflow, use the wet cloth to wipe it off immediately. No sharp items are allowed.



### 📌 NOTE!

- Formic acid and its diluted solvents or equivalent are forbidden, such as alcohol, solvents or chemical products, etc.

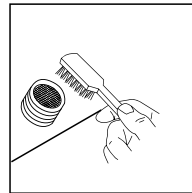
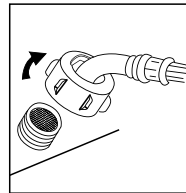
## ■ Cleaning the filter

### 📌 NOTE!

- Inlet filter must be cleaned if there is less water.

Washing the filter in washing machine:

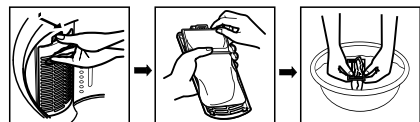
1. Screw off the inlet pipe from the backside of the machine.
2. Pull out the filter with long nose pliers and reinstall it back after being washed.
3. Use the brush to clean the filter.
4. Reconnect the inlet pipe.



Lint filter clean

1. There is a built-in lint filter in your washer. It can help to collect lint during washing cycle.
2. It is suggested to clean the lint filter every 10 cycles.
3. Take it out and clean the filter with water. Then place it back into the washer.

Normal filter

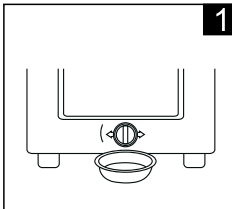


# MAINTENANCE

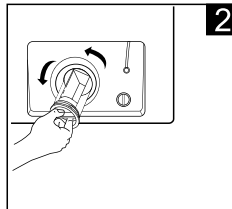
## ■ Cleaning drain pump filter

### ⚠ WARNING!

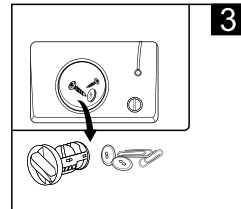
- Unplug the machine to avoid electrical shock before washing.
- Drain pump filter can filter the yarns and small foreign matters from the washing.
- Clean the filter periodically to ensure the normal operation of washing machine.



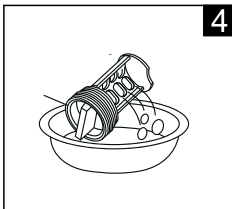
Water pump located at bottom rear of machine. Drain the water out of the pump, under which use a container to collect.



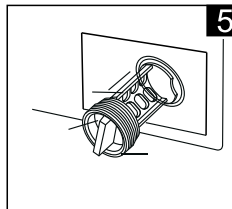
Open the filter by turning to the counter clockwise.



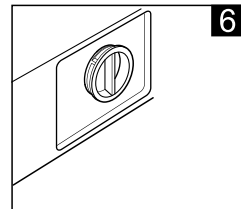
Remove extraneous matter.



Clean the filter.



Restore it and adjust the convex place to align at the pump hole.



Tighten the pump cover clockwise.

### ⚠ CAUTION!

- When the appliance is in use and depending on the programme selected there can be hot water in the pump. Never remove the pump cover during a wash cycle, always wait until the appliance has finished the cycle, and is empty. When closing the drain pump cover cap, ensure drain pump filter is securely re-tightened.

# MAINTENANCE

## ■ Trouble shooting

The start of the appliance does not work or it stops during operation.

First try to find a solution to the problem. If not, contact Shun Hing Electric Service Centre Ltd.

| Description       | Inspection Items   |
|-------------------|--|
| No washing        | <p>If the power is off or the fuse is burned out.<br/>                     If the power supply voltage is too low.<br/>                     If the water amount reaches to the required water level. (The washer will not work if the water amount does not reach the required water level)<br/>                     If it is set to "Delay" washing mode. (It will only start to work until the reservation time reached)<br/>                     If there is a power outage midway, please try pressing the "Start/Pause" button.</p>   |
| No water flows in | <p>If the power is off or the fuse is burned out.<br/>                     If the water supply is cut off or the water pressure is too low.<br/>                     If the inlet hose is properly connected and the water tap is opened.<br/>                     If the filtering screen of inlet valve is blocked by dirt.<br/>                     If the coil of inlet valve is damaged. (The slight electromagnetic sound is normal phenomenon when the inlet valve is switched on)<br/>                     If the "Start / Pause" button is pressed after the power switch is pressed.<br/>                     If there is a power outage midway, please try pressing the "Start/Pause" button.</p> |
| Abnormal draining | <p>If the water drain hose is placed very high.<br/>                     If the end of water drain hose is sealed in pond.<br/>                     If the internal rubber ring of drain valve is blocked by dirt.<br/>                     If there is a power outage midway, please try pressing the "Start/Pause" button.</p>   |
| Abnormal spin     | <p>If the top lid is closed.<br/>                     If all clothing piled largely at one side of tub or the dothing is excessively placed.<br/>                     If the washer is not placed in stable condition or it is placed in inclination state. (The ground is not flat).<br/>                     If the motor belt is loosened.<br/>                     If there is a power outage midway, please try pressing the "Start/Pause" button.</p>  |

| Error code | Reason   | Solution   |
|------------|--|--|
| E1         | Alarm for abnormal water intaking.             | Check the water tap is opened or not.  |
| E2         | Alarm for water drain has not finished.        | Check the water level sensor and drain pump.   |
| E3         | Alarm for lid not closed before wash and spin. | Close the lid.   |
| E4         | Alarm for washing stay at one side.            | Manually balance clothes in the tub by hands.  |
| EXX        | Others   | Please try again first, contact Shun Hing Electric Service Centre Ltd if there are still troubles. |

### NOTE!

- After the check, activate the appliance. If the problem occurs or the display shows other error codes again, contact Shun Hing Electric Service Centre Ltd for checking and repairing.

# MAINTENANCE

---

## ■ Technical information

Standard Water Pressure      0.03MPa - 0.8MPa

| Model    | Washing Capacity | Dimension (W*D*Hmm) | Net Weight | Rated Power | Rated Voltage |
|----------|------------------|---------------------|------------|-------------|---------------|
| RW-A80VP | 8.0kg            | 515x525x930         | 32kg       | 450W        | 220V~,50Hz    |

## ● SPECIAL AVOWAL

1. The information above has been checked. Our company reserves the hermeneutic power to any printing errors or misunderstanding on the content.
2. If there are technical improvements on the appliance, the operation manual will be updated without any prior notice. The product appearance and color are subject to the actual appliance.
3. The e-copy of user manual can be sent by e-mail on requested, please call Shun Hing Electric Works & Engineering Co. Ltd. hotline at 2861 2767.

## ● AFTER SALES SERVICES

For any defect, in the judgment of technician from Shun Hing Electric Service Centre Limited, caused under normal use, we are responsible for repairing or replacing parts of the said electrical appliance free of charge within one year guarantee period commencing from the date of purchase. Any defective part which has been replaced shall become our property. Guarantee service does not cover the repair or replacement of accessories, power cord or cabinet, etc. Additional charges shall be levied if services are required. Please present the official invoice and the guarantee certificate with the sales point's chop or the redemption center's chop for free maintenance. For enquiries, please call Shun Hing Electric Service Centre Limited hotline at 2406 5666.

**Turn off the power and contact Shun Hing Electric Service Centre Ltd. as soon as any of the following events occur.**

- The circuit breaker frequently trips or the fuse blows regularly.
- If water or foreign objects have accidentally entered the washing machine.
- If there is abnormal sound during operation.

**信興電工工程有限公司**

**SHUN HING ELECTRIC WORKS & ENGINEERING CO., LTD**

辦公室：香港九龍尖沙咀東部麼地道 67 號半島中心 9 樓

OFFICE: 9/F, PENINSULA CENTRE, 67 MODY ROAD, TSIMSHATSUI EAST,  
KOWLOON, HONG KONG

電話 TEL: (852) 2861 2767

傳真 FAX: (852) 2865 6706

網址 WEBSITE: [www.shew.com.hk](http://www.shew.com.hk) 電郵 EMAIL: [shew@shunhinggroup.com](mailto:shew@shunhinggroup.com)

**保養及維修 MAINTENANCE AND REPAIR SERVICE**

**信興電器服務中心有限公司**

**SHUN HING ELECTRIC SERVICE CENTRE LTD.**

辦公室：香港新界葵涌勝耀街2號信興中心11樓

OFFICE: 11TH FLOOR, SHUN HING CENTRE, 2 SHING YIU STREET, KWAI CHUNG, NEW  
TERRITORIES, HONG KONG

電話 TEL: (852) 2406 5666

傳真 FAX: (852) 2408 0316

網址 WEBSITE: [www.shesc.com](http://www.shesc.com)

**消耗品/附件銷售熱線 CONSUMABLES/ ACCESSORIES SALES HOTLINE**

電話 TEL: (852) 2406 5666

**客戶服務中心 CUSTOMER SERVICE CENTRES**

香港新界葵涌勝耀街2號信興中心1樓

1ST FLOOR, SHUN HING CENTRE, 2 SHING YIU STREET, KWAI CHUNG, NEW  
TERRITORIES, HONG KONG

電話 TEL: (852) 2406 5439

傳真 FAX: (852) 2408 1389

**澳門慕拉士大馬路149 號激成工業大廈(第一期) 2 樓F 座**

Avenida de Venceslau de Morais, No. 149, 2 andar - F, Edf, Industrial Keck  
Seng (Bloco 1), Macau

電話 TEL: (853) 2836 2928

傳真 FAX: (853) 2833 6405

有關最新之客戶服務中心資訊，請參閱信興服務中心網址：[www.shesc.com](http://www.shesc.com)或致電維修服務熱線查詢。

For the latest information of customer service centres, please visit [www.shesc.com](http://www.shesc.com) or call us at our hotline.