

Panasonic

ideas for life

FREE MULTI

AIR CONDITIONING SYSTEM

'eco ideas' for Lifestyles

We will promote lifestyles with virtually zero CO₂ emissions all throughout the world

'eco ideas' for Business-styles

We will create and pursue a business-style which makes the best use of resources and energy



Quality Management System Certificate  Certified to ISO 9001:2008 Cert. No.: MY-AR 1010  Certified to ISO 9001:2008 Registration Number: 0123920043FSL		Environmental Management System Certificate  Certified to ISO 14001:2004 Cert. No.: MY-ER 0112  Certified to ISO 14001:2004 Registration Number: 02107E10411R3L	
Environmental Management System Certificate  Certified to ISO 14001:2004 Cert. No.: MY-ER 0112		Environmental Management System Certificate  Certified to ISO 14001:2004 Cert. No.: MY-ER 0112	

Panasonic

ideas for life



總代理 Sole Agent:



信興電工工程有限公司
SHUN HING ELECTRIC WORKS AND ENGINEERING CO., LTD.
 辦公處: 香港九龍尖沙咀東道139號廣匯中心8樓801室
 Office: Room 801, 8/F, East Ocean Centre, 90 Granville Road, Tsimshatsui East, Kowloon, Hong Kong
 電話 Tel: 2961 2767 傳真 Fax: 2965 0706
 網站 Website: <http://www.shing.com.hk>
 電郵 Email: shew@shuninggroup.com

保養及維修 Maintenance and Repair Service

信興電器服務中心有限公司
SHUN HING ELECTRIC SERVICE CENTRE LTD.
 辦公處: 香港新界葵涌葵興街5號信興中心18樓
 Office: 18th Floor, Shun Hing Centre, 5 Shing Yu Street, Kwai Chung, N.T., H.K.
 電話 Tel: 2408 5555 傳真 Fax: 2408 0316
 網站 Website: <http://www.shing.com>
 服務支援 Technical Support: 2400 5444

• Specifications and designs are subject to change without notice.
 • All pictures are for reference only.

FREEEM07/10

INVERTER

ECO PATROL

ADVANCED*PLUS

e-ion Air Purifying System with Patrol Sensor



Multi Split

	Capacity class	2.2kW class	2.8kW class	3.2kW class	4.0kW class	5.0kW class	6.0kW class
Wall-Mounted 		CS-XE7LKEW	CS-XE9LKEW	CS-XE12LKEW	CS-XE15LKEW ^{*1}	CS-XE18LKEW ^{*1}	CS-XE21LKEW ^{*2}
Wall-Mounted 		CS-E7LKEW	CS-E9LKEW	CS-E12LKEW	CS-E15LKEW ^{*1}	CS-E18LKEW ^{*1}	CS-E21LKEW ^{*2}
Floor or Ceiling 		CS-ME10DTEG			CS-E15DTEW ^{*1}	CS-E18DTEW ^{*1}	
Mini Cassette (4-way) 		CS-E10KB4EA			CS-E15HB4EA ^{*1}	CS-E18HB4EA ^{*1}	CS-E21JB4EA ^{*2}
Hide-Away 		CS-E10KD3EA			CS-E15JD3EA ^{*1}	CS-E18JD3EA ^{*1}	

2 rooms 3 rooms 4 rooms

NEW CU-2E15LBE
NEW CU-2E18LBE
NEW CU-3E18LBE
NEW CU-4E23LBE

Additional Parts

Pipe Size Reducer
CZ-MA1P
For the indoor units marked with a star (★1), the pipe size reducer must be used.

Pipe Size Expander
CZ-MA2P
For the indoor units marked with a star (★2), the pipe size expander must be used.

Combination Patterns

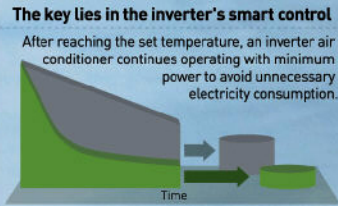
Models	Indoor Units: Possible Combination Patterns Must be within capacity class.	Allows Indoor Units Combination Class	Refrigerant Pipe Diameter			Pipe Extension				Indoor Unit Combinations									
			Indoor Unit	Liquid Side	Gas Side	Maximum Pipe Length (1 room)	Maximum Pipe Length (Total)	Maximum Charge Length	Additional Gas	Maximum Height	Type (m³/d)	Wall-Mounted	Cassette (1-way)	Mini Cassette	Floor or Ceiling	Hide-Away			
CU-2E15LBE 4.5kW Dimensions (HxWxD): 540 x 765 x 289 mm Weight: 38 kg	PERM A: 2.2 or 2.8 or 3.2 * Either unit PERM B: 2.2 or 2.8 or 3.2 * Either unit	Class 4.4	Room A	ø 6.35	ø 9.52	20 m	30 m	20 m	20 g/m	10 m	2.2	•							
			Room B	ø 6.35	ø 9.52						2.8	•							
CU-2E18LBE 5.2kW Dimensions (HxWxD): 540 x 765 x 289 mm Weight: 38 kg	PERM A: 2.2 or 2.8 or 3.2 * Either unit PERM B: 2.2 or 2.8 or 3.2 * Either unit	Class 4.4	Room A	ø 6.35	ø 9.52	20 m	30 m	20 m	20 g/m	10 m	2.2	•							
			Room B	ø 6.35	ø 9.52						2.8	•							
CU-3E18LBE 6.8kW Dimensions (HxWxD): 540 x 875 x 320 mm Weight: 57 kg	PERM A: 2.2 or 2.8 or 3.2 or 4.0 or 5.0 * Either unit PERM B: 2.2 or 2.8 or 3.2 or 4.0 or 5.0 * Either unit PERM C: 2.2 or 2.8 or 3.2 or 4.0 or 5.0 * Either unit	Class 4.4	Room A	ø 6.35	ø 9.52	25 m	50 m	30 m	20 g/m	15 m	2.2	•	•						
			Room B	ø 6.35	ø 9.52						2.8	•	•	•	•				
			Room C	ø 6.35	ø 9.52						3.2	•	•	•	•	•			
CU-4E23LBE 8.0kW Dimensions (HxWxD): 715 x 875 x 320 mm Weight: 73 kg	PERM A: 2.2 or 2.8 or 3.2 or 4.0 or 5.0 or 6.0 * Either unit PERM B: 2.2 or 2.8 or 3.2 or 4.0 or 5.0 or 6.0 * Either unit PERM C: 2.2 or 2.8 or 3.2 or 4.0 or 5.0 or 6.0 * Either unit PERM D: 2.2 or 2.8 or 3.2 or 4.0 or 5.0 or 6.0 * Either unit	Class 4.4	Room A	ø 6.35	ø 9.52	75 m	60 m	40 m	70 g/m	15 m	2.2	•	•						
			Room B	ø 6.35	ø 9.52						2.8	•	•	•	•	•			
			Room C	ø 6.35	ø 9.52						3.2	•	•	•	•	•	•		
			Room D	ø 6.35	ø 9.52						4.0	•	•	•	•	•	•	•	

Outstanding Energy-Saving Performance

Dramatically Cut in Power Consumption for Big Savings

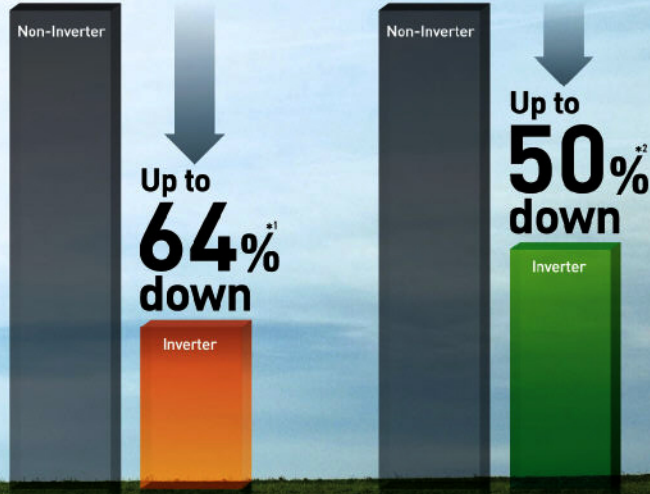
eco ideas

Panasonic inverter air conditioners provide exceptional energy-saving performance that ranks among the highest in the industry. This dramatically cuts electricity consumption and CO₂ emissions, allowing an environment-friendly operation.



■ During Heating

■ During Cooling



*1 Comparison of cumulative electricity consumption during heating to reach the setting temperature [Panasonic in-house comparison] Test conditions: Indoor and outdoor temperature: 7°C/ Setting temperature: 22°C/ Fan speed: High
 *2 Comparison of cumulative electricity consumption during 8 hours of cooling [Panasonic in-house comparison] Test conditions: Room temperature at start: 35°C/ Setting temperature: 25°C

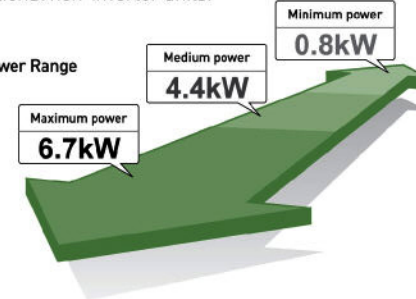
INVERTER

Advanced Inverter Technology — Less Energy and More Comfort

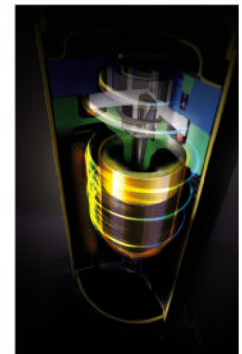
How can an inverter save energy?

The inverter constantly adjusts compressor rotation speed to provide optimum performance at all times. This extremely precise operation enables quick cooling and heating while reducing power consumption compared to conventional non-inverter units.

■ Even Wider Output Power Range

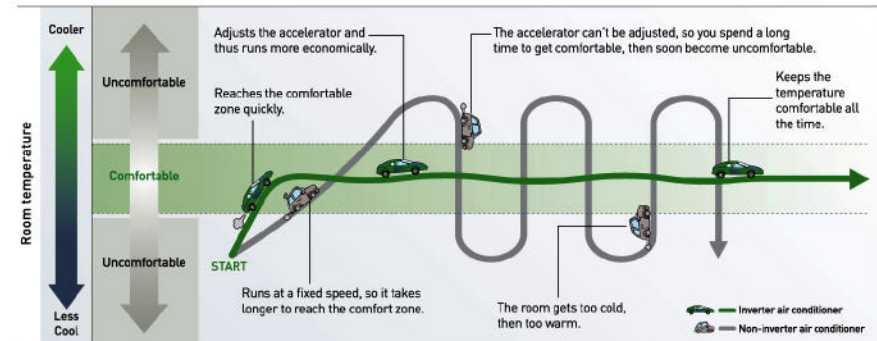


The graph shows the S-XE12JKDW's wide power output range during heating.



■ The Advantages of Inverter Air Conditioners

Comparing inverter and non-inverter air conditioners to cars...



*Image of output power fluctuation

Specifications

Inverter Multi Split : Indoor Units



Cooling
Heating

Model (Capacity)	Wall-Mounted					
	CS-XE7LKEW (2.2 kW class)	CS-XE9LKEW (2.8 kW class)	CS-XE12LKEW (3.2 kW class)	CS-XE15LKEW (4.0 kW class)	CS-XE18LKEW (5.0 kW class)	CS-XE21LKEW (6.0 kW class)
Power Source	Single phase, 230 V, 50 Hz					
Noise (Hi/Lo/S-Lo) Sound Pressure Level	40/29/26 40/29/26	40/29/26 40/29/26	44/32/29 44/32/29	44/32/29 44/33/30	46/33/30 46/35/32	46/33/30 46/35/32
Sound Power Level	56 56	56 56	60 60	60 60	62 62	62 62
Fan Output	40	40	40	40	40	40
Dimensions						
Height	290	290	290	290	290	290
Width	870	870	870	870	1,070	1,070
Depth	204	204	204	204	235	235
Net Weight	9.0	9.0	9.0	9.0	12.0	12.0
Connecting Cable	3 + 1 (earth), ø1.5 mm ²					
Refrigerant Pipe Diameter						
Liquid Side	6.35	6.35	6.35	6.35	6.35	6.35
Gas Side	9.52	9.52	9.52	9.52 ^{*1}	9.52 ^{*1}	12.70 ^{**}

* For models with the Air Purifying Filter, the specifications indicate values with the filter removed.

Model (Capacity)	Wall-Mounted						Floor or Ceiling		
	CS-E7LKEW (2.2 kW class)	CS-E9LKEW (2.8 kW class)	CS-E12LKEW (3.2 kW class)	CS-E15LKEW (4.0 kW class)	CS-E18LKEW (5.0 kW class)	CS-E21LKEW (6.0 kW class)	CS-ME10DTEG (2.8 kW class)	CS-E15DTEW (4.0 kW class)	CS-E18DTEW (5.0 kW class)
Power Source	Single phase, 230 V, 50 Hz								
Noise (Hi/Lo/S-Lo) Sound Pressure Level	40/29/26 40/29/26	40/29/26 40/29/26	44/32/29 44/32/29	44/32/29 44/33/30	46/33/30 46/35/32	46/33/30 46/35/32	39/31/28 40/31/28	45/37/34 45/33/30	46/39/36 47/35/32
Sound Power Level	56 56	56 56	60 60	60 60	62 62	62 62	52 53	58 58	59 60
Fan Output	40	40	40	40	40	40	51	51	51
Dimensions									
Height	290	290	290	290	290	290	540	540	540
Width	870	870	870	870	1,070	1,070	1,028	1,028	1,028
Depth	204	204	204	204	235	235	200	200	200
Net Weight	9.0	9.0	9.0	9.0	12.0	12.0	17.0	17.0	18.0
Connecting Cable	3 + 1 (earth), ø1.5 mm ²								
Refrigerant Pipe Diameter									
Liquid Side	6.35	6.35	6.35	6.35	6.35	6.35	6.35	6.35	6.35
Gas Side	9.52	9.52	9.52	9.52 ^{*1}	9.52 ^{*1}	12.70 ^{**}	9.52	12.70 ^{*1}	12.70 ^{*1}

Model (Capacity)	Mini Cassette				Hide-Away		
	CS-E10KB4EA (2.8 kW class)	CS-E15HB4EA (4.0 kW class)	CS-E18HB4EA (5.0 kW class)	CS-E21JB4EA (6.0 kW class)	CS-E10KD3EA (2.8 kW class)	CS-E15JD3EA (4.0 kW class)	CS-E18JD3EA (5.0 kW class)
Power Source	Single phase, 230 V, 50 Hz						
Noise (Hi/Lo/S-Lo) Sound Pressure Level	34/26/23 35/28/25	34/26/23 35/28/25	36/28/25 37/29/26	41/33/30 42/34/31	31/27/24 35/27/24	33/27/24 35/29/26	41/30/27 41/32/29
Sound Power Level	47/39 48/41	47/39 48/41	49/41 50/42	54/62 55/62	47/43 51/43	49/43 51/44	57/46 57/48
Fan Output	40	40	40	40	30	30	30
External Static Pressure Pa(mmAq)	—	—	—	—	25 (2.55)	25 (2.55)	25 (2.55)
Air Circulation m ³ /min	—	—	—	—	7.0	7.8	10.3
Dimensions							
Height	260	260	260	260	235	235	265
Width	575	575	575	575	750	750	750
Depth	575	575	575	575	370	370	370
Net Weight	18.0	18.0	18.0	18.0	17.0	17.0	18.0
Connecting Cable	3 + 1 (earth), ø1.5 mm ²						
Refrigerant Pipe Diameter							
Liquid Side	6.35	6.35	6.35	6.35	6.35	6.35	6.35
Gas Side	9.52	12.70 ^{*1}	12.70 ^{*1}	12.70 ^{**}	9.52	12.70 ^{*1}	12.70 ^{**}

*1 A pipe size reducer (CZ-MA1P) must be used to reduce the pipe diameter to 9.52 mm at the connection port of the indoor unit.
*2 A pipe size expander (CZ-MA2P) must be used to expand the pipe diameter of the outdoor unit from 9.52mm to 12.7 mm at the connection port of the indoor unit.

Inverter Multi Split : Outdoor Units



Cooling
Heating

Model (50Hz)	CU-2E15LBE	CU-2E18LBE	CU-3E18LBE	CU-4E23LBE
Inoor-units Combination	2.2 kW + 2.2 kW	3.2 kW + 3.2 kW	2.2 kW + 2.8 kW + 4.0 kW	2.2 kW + 2.8 kW + 2.8 kW + 5.2 kW
Power Source	Single phase, 230 V, 50 Hz (Power supply from outdoor unit)			
Cooling Operation				
Capacity	4.5 (1.5 - 5.0)	5.2 (1.5 - 5.4)	5.2 (1.8 - 7.3)	6.6 (1.9 - 8.6)
Electrical Data				
Running Current	6.75	7.10	5.30	7.50
Power Input	1,230 (250 - 1,350)	1,520 (250 - 1,580)	1,200 (360 - 2,180)	1,680 (340 - 2,470)
EER	3.66	3.42	4.33	4.05
Noise				
Sound Pressure Level	47	49	46	48
Sound Power Level	62	64	60	62
Heating Operation				
Capacity	5.4 (1.1 - 7.0)	5.6 (1.1 - 7.2)	6.0 (1.6 - 9.3)	8.6 (3.0 - 10.60)
Electrical Data				
Running Current	5.20	5.35	6.50	8.60
Power Input	1,170 (210 - 1,670)	1,210 (210 - 1,703)	1,400 (320 - 2,110)	1,850 (580 - 2,600)
COP	4.62	4.63	4.86	4.65
Noise				
Sound Pressure Level	49	51	47	49
Sound Power Level	64	66	61	63
Maximum Current	12.0	12.0	15.2	15.6
Starting Current	5.75	7.10	6.50	8.60
Compressor Output	1,200	1,500	1,300	1,300
Fan Output	40	40	60	60
Circuit Breaker Ratio	15	15	20	20
Dimensions				
Height	540	540	795	795
Width	780 (+70)	780 (+70)	875 (+95)	875 (+95)
Depth	289	289	320	320
Net Weight	38	38	71	72
Connecting Cable	3 - 1 (earth), ø0.15 mm ²			
Pipe Length Range (1 room)	3 - 20	3 - 20	3 - 25	3 - 25
Maximum Pipe Length (Total room)**	30	30	50	60
Refrigerant Pipe Diameter				
Liquid Side	6.35	6.35	6.35	6.35
Gas Side	9.52	9.52	9.52	9.52
Energy Saving Classification				
Cooling Class	A	A	A	A
Annual Energy Consumption	615	760	600	840
Heating Class	A	A	A	A

A Energy saving ranked according to European standards.

* The cooling sound power level specification is based on EUROVENT Document 6/C006-97.

** Additional Gas might be required for some models.

*** Refer to page 25 for information on Additional Gas.

■ For models with the Air Purifying Filter, the specifications indicate values with the filter removed.

Rating Conditions

	Cooling	Heating
Inside air temperature	27°C DB/19°C WB	20°C DB
Outside air temperature	35°C DB/24°C WB	7°C DB/6°C WB

Caution (Important) Please do not use copper pipes which the thickness is less than 0.8mm.

Specifications

At least two indoor units must be connected.

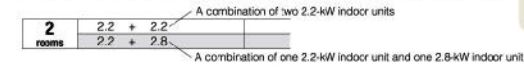
Multi Inverter Split Approximate Cooling and Heating Capacities

• The capacities shown here cover the operating patterns of all indoor unit combinations.

• How to Read the Table

Indoor unit combinations are shown here as the number of units operating, and their capacity class.

Note: When the Multi Inverter Split Type is used to operate two or more indoor units simultaneously, the capacity of each indoor unit may be lower than that when operating only one indoor unit. Be sure to refer to the following table to select the appropriate models.



CU-2E15LBE

A.E.C. : Annual Energy Consumption

Indoor Units Capacity	COOLING OPERATION						HEATING OPERATION								
	Cooling Capacity			Running Current	Power Input		Heating Capacity			Running Current	Power Input		Heating Class		
	Room A	Room B	Total		Room A	Room B	Total	Room A	Room B		Total				
1 room	2.2	2.2	2.20 (1.1-2.9)	2.45	500	(220-750)	A	290	3.20	-	3.20 (0.7-4.8)	3.75	850	(170-1,410)	A
2 rooms	2.2 + 2.2	2.25	2.25 (1.5-5.2)	5.75	1,230	(250-1,580)	A	615	2.70	2.70	5.40 (1.1-7.0)	5.20	1,170	(210-1,670)	A

CU-2E18LBE

A.E.C. : Annual Energy Consumption

Indoor Units Capacity	COOLING OPERATION						HEATING OPERATION								
	Cooling Capacity			Running Current	Power Input		Heating Capacity			Running Current	Power Input		Heating Class		
	Room A	Room B	Total		Room A	Room B	Total	Room A	Room B		Total				
1 room	2.2	2.2	2.20 (1.1-2.9)	2.45	500	(220-750)	A	290	3.20	-	3.20 (0.7-4.8)	3.75	850	(170-1,410)	A
2 rooms	2.2 + 2.2	2.25	2.25 (1.5-5.2)	5.75	1,230	(250-1,580)	A	615	2.70	2.70	5.40 (1.1-7.0)	5.20	1,170	(210-1,670)	A

CU-3E18LBE

A.E.C. : Annual Energy Consumption

Indoor Units Capacity	COOLING OPERATION						HEATING OPERATION									
	Cooling Capacity			Running Current	Power Input		Heating Capacity			Running Current	Power Input		Heating Class			
	Room A	Room B	Room C		Room A	Room B	Room C	Room A	Room B		Room C					
1 room	2.2	2.2	2.2	2.20 (1.1-2.9)	2.5	500	(340-810)	A	290	3.20	-	3.20 (1.2-4.1)	3.7	740	(300-1,230)	A
2 rooms	2.2 + 2.2	2.25	2.25	2.25 (1.5-5.2)	5.75	1,230	(250-1,580)	A	615	2.70	2.70	5.40 (1.1-7.0)	5.20	1,170	(210-1,670)	A

CU-4E23LBE

A.E.C. : Annual Energy Consumption

Indoor Units Capacity	COOLING OPERATION										HEATING OPERATION									
	Cooling Capacity			Running Current	Power Input		Cooling Class	A.E.C.*	Heating Capacity			Running Current	Power Input		Heating Class					
	Room A	Room B	Total		Room A	Room B			Total	Room A	Room B		Total							
1 room	2.2	2.2	2.2	2.20 (1.1-2.9)	2.5	500	(340-810)	A	290	3.20	-	3.20 (1.2-4.1)	3.7	740	(300-1,230)	A				
2 rooms	2.2 + 2.2	2.25	2.25	2.25 (1.5-5.2)	5.75	1,230	(250-1,580)	A	615	2.70	2.70	5.40 (1.1-7.0)	5.20	1,170	(210-1,670)	A				

*1 Energy saving ranked according to European standards.

Cassette (60x60) Type

Semi FS

Features

- Anti-Mould, One Touch Air Filter
- Odour-Removing Function
- Removable, Washable Panel
- Quiet Mode
- Powerful Mode
- Soft Dry Operation Mode
- Airflow Direction Control (Up & Down)
- Auto Chargeover
- Hot Start Control
- 24-Hour ON & OFF
- Random Auto Restart
- Long Piping 20m(E18:30m)
- Top Panel Maintenance Access
- Self-Diagnostic Function
- Super Allergy-Buster Filter (option)

Compact Design Allows Space Saving!



Specifications Inverter Models

Items	Cooling Capacity		Heating Capacity		Power Source**		Current	Power Input		EER COP	Annual Energy Consumption	Air Volume	Noise Level*				Sound Power Level		Dimensions		Net Weight		Piping Connection		Pipe Length			Operation Range (Outdoor)	
	Indoor	Outdoor	Indoor	Outdoor	Phase	V		W	W/W				W	W/W	W	W	Indoor (H)	Outdoor (H)	Indoor (H)	Outdoor (H)	Indoor (H)	Outdoor (H)	Indoor	Outdoor	Indoor	Outdoor	Gas Side		Liquid Side
CS-E10KB4EA CU-E10HBEA	2.50 (0.9-3.2)	3.20 (1.0-4.0)	3.20 (1.0-4.0)	3.20 (1.0-4.0)	1φ	230-240	2.9	690 3.30	1040-1170 1040-1170	4.03A	310	10.5	34/29/23	45	47	58	260	51	540	18.0	2.5	35	9.52 (3/8")	6.35 (1/4")	3-20	15	10	20	-10-43
CS-E15HB4EA CU-E15HBEA	4.10 (1.4-5.0)	5.10 (1.6-6.0)	5.10 (1.6-6.0)	5.10 (1.6-6.0)	1φ	230-240	6.0	1300 5.70	2090-2310 2090-2310	3.15A	650	10.5	34/29/23	45	47	60	280	51	750	18.0	2.5	48	12.70 (1/2")	6.35 (1/4")	3-20	15	10	20	-10-43
CS-E18HB4EA CU-E18HBEA	6.00 (2.0-7.0)	7.50 (2.4-8.5)	7.50 (2.4-8.5)	7.50 (2.4-8.5)	1φ	230-240	8.0	1700 7.50	2560-2890 2560-2890	3.14A	705	11.0	36/29/25	47	49	61	290	51	750	18.0	2.5	48	12.70 (1/2")	6.35 (1/4")	3-20	20	10	20	-10-43
CS-E21JB4EA CU-E21HBEA	8.00 (2.7-9.0)	10.00 (3.2-11.0)	10.00 (3.2-11.0)	10.00 (3.2-11.0)	1φ	230-240	9.2	2250 9.90	3260-3690 3260-3690	2.88A	1,025	12.8	41/33/31	49	54	62	280	51	750	18.0	2.5	50	12.70 (1/2")	6.35 (1/4")	3-20	20	10	20	-10-43

Hide-Away Type

Semi FS

Features

- Odour-Removing Function
- Quiet Mode
- Powerful Mode
- Soft Dry Operation
- Auto Chargeover
- Hot Start Control
- 24-Hour ON & OFF Real Setting
- Random Auto Restart Timer
- Long Piping 20m, (E18:30m)
- Top Panel Maintenance Access
- Self-Diagnostic Function

Thin, Lightweight Design for Easy Installation

Specifications Inverter Models

Items	Cooling Capacity		Heating Capacity		Power Source**		Current	Power Input		EER COP	Annual Energy Consumption	Air Volume	Noise Level*				Sound Power Level		Dimensions		Net Weight		Piping Connection		Pipe Length			Operation Range (Outdoor)
	Indoor	Outdoor	Indoor	Outdoor	Phase	V		W	W/W				W	W/W	W	W	Indoor (H)	Outdoor (H)	Indoor (H)	Outdoor (H)	Indoor (H)	Outdoor (H)	Indoor	Outdoor	Indoor	Outdoor	Gas Side	
CS-E10KD3EA CU-E10H3EA	2.50 (0.9-3.2)	3.20 (1.0-4.0)	3.20 (1.0-4.0)	3.20 (1.0-4.0)	1φ	230-240	3.1	690 3.30	1040-1170 1040-1170	3.68A	340	6.9	34/31.5/27/24	46	49	59	235	540	17.0	1.7	35	9.52 (3/8")	6.35 (1/4")	3-20	15	10	20	-10-43
CS-E15JD3EA CU-E15H3EA	4.10 (1.4-5.0)	5.10 (1.6-6.0)	5.10 (1.6-6.0)	5.10 (1.6-6.0)	1φ	230-240	6.2	1300 5.70	2090-2310 2090-2310	3.21A	620	7.9	34/31.5/32/27/24	46	49	59	235	750	17.0	1.7	48	12.70 (1/2")	6.35 (1/4")	3-20	15	10	20	-10-43
CS-E18JD3EA CU-E18H3EA	6.00 (2.0-7.0)	7.50 (2.4-8.5)	7.50 (2.4-8.5)	7.50 (2.4-8.5)	1φ	230-240	8.3	1700 7.50	2560-2890 2560-2890	3.15A	810	10.4	36/31.5/31/27/24	47	51	61	285	750	18.0	1.8	48	12.70 (1/2")	6.35 (1/4")	3-20	20	10	20	-10-43

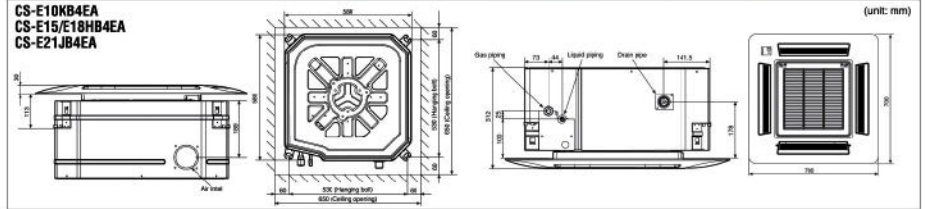
Rating Conditions

	Cooling	Heating
Inside air temperature	27°C DB/19°C WB	20°C DB
Outside air temperature	35°C DB/24°C WB	7°C DB/6°C WB

* The Sound Pressure Level of the outdoor unit shows the value measured of a position 1 meter in front of the main body and 1.5 meters from the ground.
 **Data shows the case of 230V
 # Add 65mm for power supply box
 # Add 65mm for piping port.

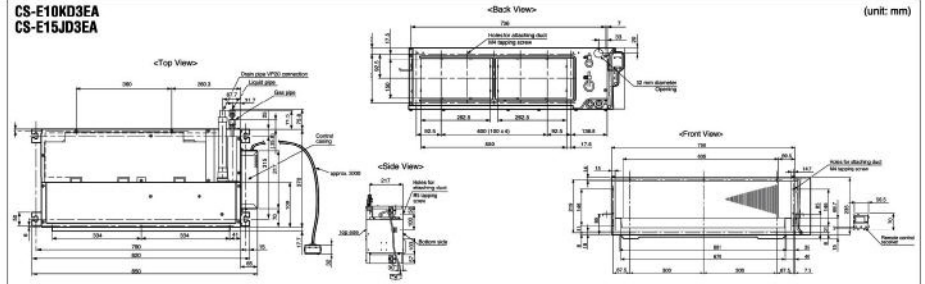
CASSETTE TYPE

CS-E10KB4EA
CS-E15/18HB4EA
CS-E21JB4EA



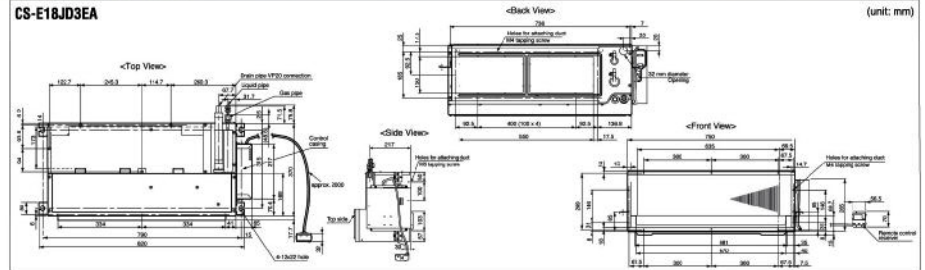
HIDE-AWAY TYPE

CS-E10KD3EA
CS-E15JD3EA



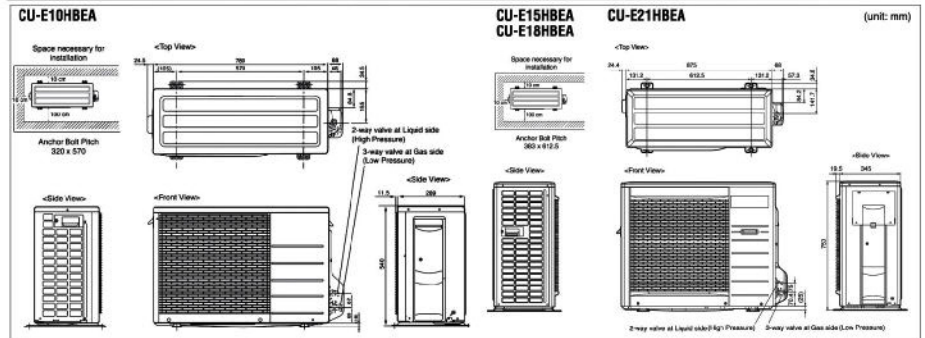
HIDE-AWAY TYPE

CS-E18JD3EA



OUTDOOR TYPE

CU-E10HBEA



Optional Accessories

SUPER allergy-buster filter



CZ-SA13P

Applicable Models

CZ-SA13P

Cassette (60 x 60)

Replacement: every 3 years

CS-E10KB4EA, CS-E15HB4EA, CS-E18HB4EA, CS-E21JB4EA